



ANTI LIGATURE RANGE door handles are all made to order.
Please check with our sales team concerning DDA & Document M requirements.

ASH1300 Anti Ligature Range

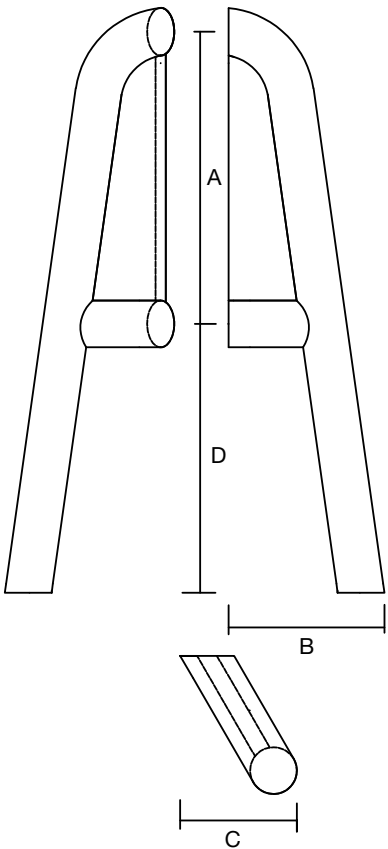


Technical Specification

Detailed Photography



Technical Illustration



Style	A	B	C	D	E	F	Finish	Code
ASH 1300	200	92	90	185	NA	NA	Copper	CP
							Satin Stainless	SS
							Polished Brass	PB
							Satin Brass	SB
							Satin Anodised	SAA
							Colour Coated	COL

** Extra fixing points may be required on some sizes.
Contact our technical department for assistance.

Ordering Guide

Please use the following guide as an example when placing an order.

Style

ASH1300 . PS

Finish

More ordering and fixing information can be found at the back of this catalogue

ASH 1300

ASH1310 Anti Ligature Range

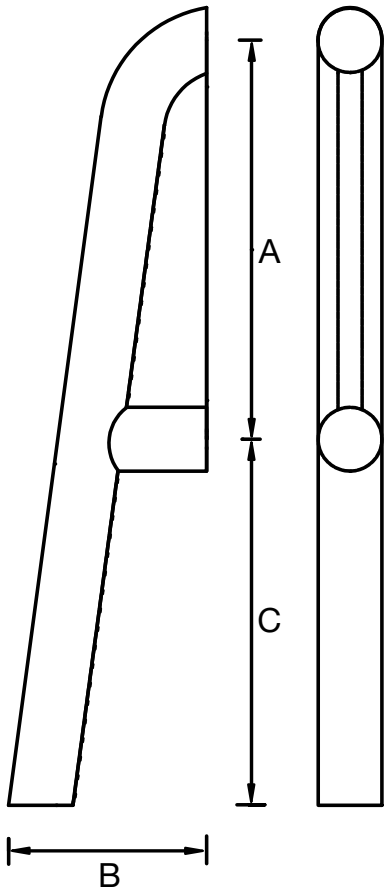


Technical Specification

Detailed Photography



Technical Illustration



Style	A	B	C	D	E	F	Finish	Code
ASH 1310	200	100	185	NA	NA	NA	Copper	CP
							Satin Stainless	SS
							Polished Brass	PB
							Satin Brass	SB
							Satin Anodised	SAA
							Colour Coated	COL

** Extra fixing points may be required on some sizes.
Contact our technical department for assistance.

Ordering Guide

Please use the following guide as an example when placing an order.

Style

ASH1310 . PS

Finish